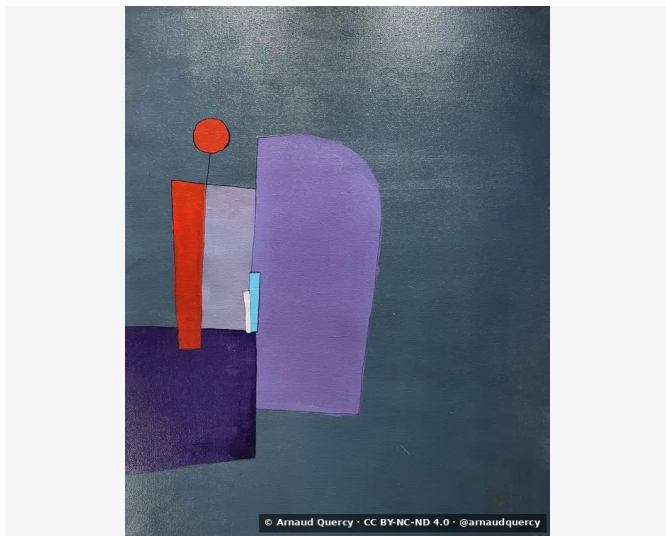


Nanopublication – Computational Image Analysis – AQC0608

by Arnaud Quercy · Ab Major – Research on Harmony – Variation 1 · 2024



CLAIM 1: COMPUTATIONAL IMAGE ANALYSIS – AQC0608

Analysis record [3]: Ab Major [1] – Research on Harmony – Variation 1 (AQC0608) [2] by Arnaud Quercy [2]. Method: k-means. Parameters: 10 colors. Metrics: color distribution, texture, brightness, spatial patterns. Completed: 2026-02-08.

CONTEXT

Analysis performed according to MMIDS-CMP-2025 [3] includes four metric categories: (1) Color distribution via k-means (10 colors), (2) Texture analysis using Haralick features, (3) Brightness and contrast measurements, (4) Spatial pattern characterization. Source image [5]: 2598x3248 pixels. Analysis date: 2026-02-08.

COLOR ANALYSIS

Rank	Color	Hex	%	Family	Name
1		3F505F	22.5	blue	grayish purple
2		2F404E	22.0	blue	grayish purple
3		526271	16.5	blue-violet	grayish purple
4		8980AE	9.1	violet	dusty mauve
5		6B7985	8.1	blue-violet	grayish purple
6		29204A	6.7	violet	very dark purple
7		6D5B98	6.0	violet	dusty mauve
8		A3A6C0	5.0	violet	steel gray
9		C53219	2.5	red-orange	firebrick
10		D0DAE2	1.6	blue	gainsboro
11		FAF2E8	0.3	yellow-orange	white [Accent]

Color Families:

Family	%
blue	46.1
violet	26.8
blue-violet	24.6
red-orange	2.5
yellow-orange	0.3

Accent Colors:

Hex	Family	Name	Chroma
FAF2E8	yellow-orange	white	6.1

TEXTURE ANALYSIS

Metric	Value
Global Roughness	0.147
Mean Local Roughness	0.062
Roughness Uniformity	0.041
Edge Density	0.291
Mean Gradient Magnitude	0.462
Gradient Variance	0.183
Gradient Smoothness	0.075
Directional Coherence	0.008
Pattern Complexity	0.162
Pattern Repetition	1.0
Detail Frequency Ratio	0.718
Spatial Variation	0.08
Texture Consistency	0.62

BRIGHTNESS & CONTRAST ANALYSIS

Metric	Value
Mean Brightness	0.36
Brightness Variance	0.147
Brightness Uniformity	0.591
Brightness Skewness	1.134
Brightness Entropy	7.097
Rms Contrast	0.147
Michelson Contrast	1.0
Weber Contrast	0.627
Mean Local Contrast	0.07
Contrast Uniformity	0.359
Dynamic Range	1.0
Effective Dynamic Range	0.467
Shadow Percentage	50.455
Midtone Percentage	45.254
Highlight Percentage	4.291
Shadow Clipping	0.0
Highlight Clipping	0.02
Tonal Balance	0.0
Fine Contrast	0.031
Medium Contrast	0.084
Coarse Contrast	0.081
Multiscale Contrast Ratio	0.389
Edge Contrast	0.462
Contrast Clustering	0.38

SPATIAL DISTRIBUTION ANALYSIS

Metric	Value
Spatial Coherence	0.709
Color Clustering	0.457
Color Transition Smoothness	0.0
Transition Uniformity	0.0
Sharp Transition Ratio	0.1
Transition Directionality	0.007
Mean Saturation	0.349
Saturation Variance	0.024
Low Saturation Ratio	0.345
Medium Saturation Ratio	0.62
High Saturation Ratio	0.035
Saturation Clustering	0.997
Hue Concentration	0.867
Complementary Balance	0.015
Analogous Dominance	0.966
Temperature Bias	-0.68

Methodology

This analysis employs standardized computational methods for objective image characterization. Color extraction uses k-means clustering algorithm. Texture analysis applies Haralick feature extraction. Brightness metrics include mean, variance, and distribution analysis. Spatial patterns are characterized through coherence and clustering measurements. All methods are deterministic and reproducible. Analysis performed by Multimodal Institute's computational imaging systems.

REFERENCES

[1] Arnaud Quercy (2024). Ab Major - Research on Harmony - Variation 1 - Catalog raisonné. <https://arnaudquercy.art/en/catalogue-raisonne/AQC0608.html>

[2] Quercy, A. (2024). Ab Major - Research on Harmony - Variation 1 - Gallery. https://artquamanima.com/en/art-works/2024/06/ab-major-research-on-harmony-variation-1_6so.html

[3] Quercy, A. (2025). Computational Image Analysis Standard - MMIDS-CMP-2025 <https://multimodal.institute/en/publications/2025/11/mmids-cmp-2025-computational-image-analysis-standard-dg1.html>

WHERE THIS WORK LIVES

THEMATIC ELEMENTS

chromesthetic mapping Ab Major triad circle of fifths
 acrylic on canvas blue-violet composition
 geometric abstraction Synesthetic Explorations
 Research on Harmony Arnaud Quercy
 contemporary French painting

EPISTEMIC PROFILE

Claim type computational analysis

Voice third person

Epistemic status empirical measurement

Methodology computational analysis

Certainty high

CHECKSUM (SHA-256)

e519bd465873eda3fb55cc8f04ca4ca685abec38135f9abce70bbc6d0cb03a29

Licensed under Creative Commons Attribution 4.0 International (CC BY 4.0)

Artist Arnaud Quercy

Date 2024

Collection Synesthetic Explorations

Certificate 20240602-0104

Asset code AQC0608

Identifier NAN-COL000338

Version 1

Published 2026-02-03

ISSN: [pending – Library of Congress]

© 2026 Multimodal Institute

Published by Art Quam Anima Publishing New York,
an imprint of AQA PUBLISHING LLC

c/o Northwest Registered Agent, 418 Broadway Ste N
Albany, NY 12207, USA
+1 917-764-5470

publishing.artquamanima.com

Last updated: 2026-06-03

Persistent URI: <https://multimodal.institute/en/nanopubs/2026/02/AQC0608-computational-image-analysis-aqc0608.pdf>